



## MXM ELECTRIC HOT MELT GUN

### All-Electric Adhesive Dispensing Valve Featuring EcoStitch Technology

Valco Melton's MXM electric hot melt valve is the workhorse for any hot melt dispensing solution. The MXM electric valve can operate at extremely high speeds reaching 15,000 cycles per minute for short bursts and have a lifetime capable of more than 2 billion cycles depending on operating conditions. The MXM electric valve is used for many different applications, most notably in Food and Beverage Packaging where production uptime is essential and adhesive savings ROI is paramount. Other applications including Folding Carton, Sift Proof Packaging and Slot Coat applications are ideal fits for the MXM as it has a variety of attachments that make it configurable to nearly any requirement. The MXM is widely known as the "EcoStitch" valve in Food and Beverage packaging where end users focus on adhesive usage reduction, instant ROI and process improvement.

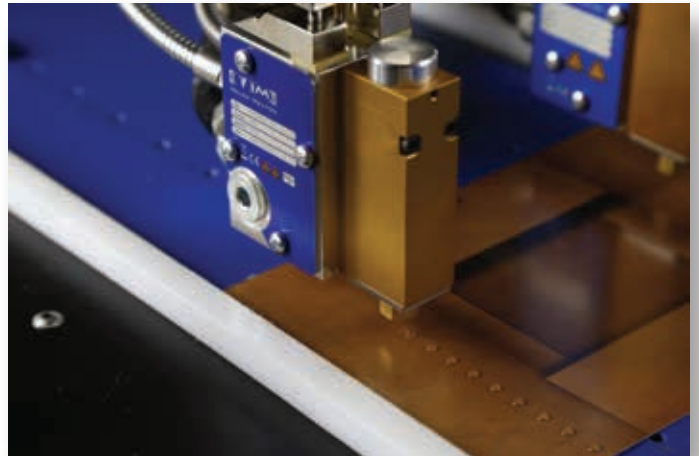
### Easily Adaptable For Any Application

Unlike many electric applicators that have been introduced to the industry in the past, the MXM EcoStitch valve is not limited to viscosity or temperatures. The MXM is comfortable with viscosities ranging up to 7,000cps and with operating temperatures up to 400 degrees F.

The MXM uses a custom electromagnetic coil design that maximizes speed, accuracy and consistency all while being able to run in EcoStitch mode and not have any performance reductions due to dynamic seal wear as found with all air operated gluing modules and valves.

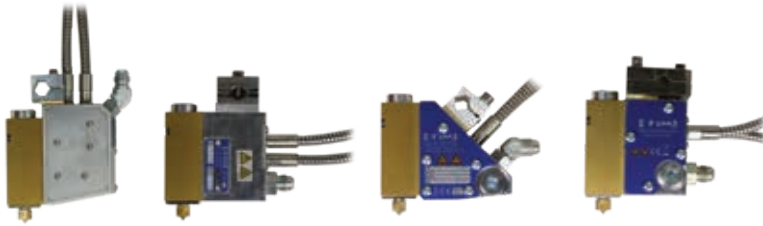
### Configurable for Your Machine and Production Needs:

- Multiple manifold configurations for single and multi-module needs provide easy installation and retrofit kits for nearly every existing application and machine.
- Dot and Gap spacing easily controlled and automatically adjusts based on your current machine recipes.
- Bracket mounts configure to existing machine requirements
- Ability to use multi-orifice nozzles in straight and 90-degree configurations while maintaining excellent EcoStitch pattern quality.
- Adapts to existing melters with simple gun conversions for lower initial cost and ease of installation.

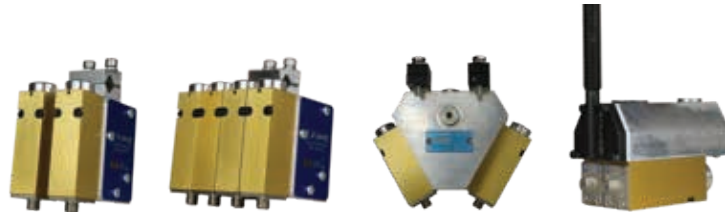


## Ideal for Carton Sealing and Case Erecting

Single Module Gun Configurations allow for easy installation and machine compatibility



## Multi-Module Configurations



## VD2 Drivers

- All MXM EcoStitch guns operate from a valve driver that interfaces with existing PLC, PLS or most pattern control 24VDC output signals.
- Easily integrated into any electrical cabinet and fits seamlessly within existing machine recipes.



## Technical Specifications

EcoStitch™ Characteristics	
Valve Width	22 mm (0.860 in)
Valve Height	155 mm (6.10 in)
Mounting	12.70 mm (0.500 in) round bar
Fluid Pressure	70 bar (1000 psi)
Life Cycle	2 billion cycles*
Max. Cycle rate	15,000 cycles/min for short durations
Performance	2 msec dispense, 2 msec gap

\* Depending on operating conditions



For more information, visit [valcomelton.com](http://valcomelton.com) or contact your local Valco Melton representative.

World Headquarters: USA, Cincinnati, Ohio (Corporate Offices) • Tel:+1.513.874.6550 • Fax: +1.513.874.3612

Europe Headquarters: Spain, Navarra • Tel:+34.948.321.580 • Fax:+34.948.326.584

Asia Headquarters: China, Xiamen, Fujian • Tel:+86.592.591.7854 • Fax:+86.592.591.7834

info@valcomelton.com • Serving over 76 Countries Worldwide • valcomelton.com