

MCP-4P

Glue System Pattern Control



A programmable microprocessor control for packaging.

The **MELTON MCP-4P** is a full-featured adhesive system pattern control with exceptional value, ideal for the packaging industry. The MCP-4P is suited for packaging applications including palletizing, case & carton sealing and erection, graphic arts, or any variable speed requirements.

MELTON's MCP-4P:

- Mounts vertically
- Up to 4 trigger inputs
- Simple installation using 24 VDC power supply from PLC or electrical cabinet
- 4-Channel inputs capable of multiple glue patterns
- Low-speed version with field wireable connectors
- High-speed version with M12 plug-in connectors
- Timer or Encoder functions
- Optional integral line speed/glue pressure control
- Multi valve, complex glue patterns
- Job storage
- Stores 4 trigger inputs to maximize productivity of existing valve/trigger layouts

Available in Two Versions:



Version 074xx041

- Input voltage 24 VDC
- Dimensions: 106mm deep x 282 mm wide x 245 mm high
- Remote 100-240 VAC, 50/60 Hz power supply optional
- Field-wireable connections
- External EPC
- Will operate 12/24 VDC pneumatic valves



Version 074xx040

- Input voltage 100-130/200-240 VAC, 50/60 Hz, field selectable
- Dimensions: 168mm deep x 285 mm wide x 245mm high (with power supply)
- M12 connectors
- Pre-configured to act as a valve driver
- External EPC (Electronic Pressure Control)



Bottom View, 24VDC Version MCP-4P (074xx041)

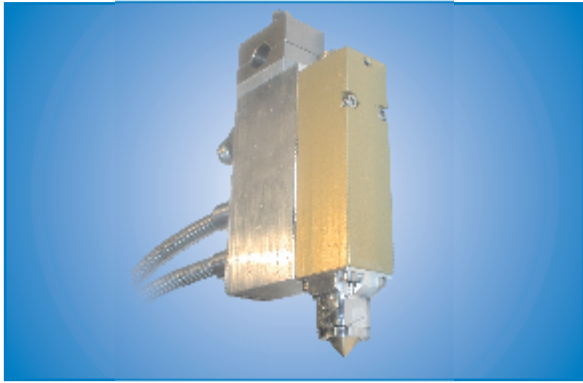


MCP-4P Added Features:

- DIN-rail mountable inside electrical cabinet
- Second programmable 0-10 V line speed output
- Available integrated 100-130/200-240 VAC, 50/60 Hz power supply



MCP-4P Glue System Pattern Control



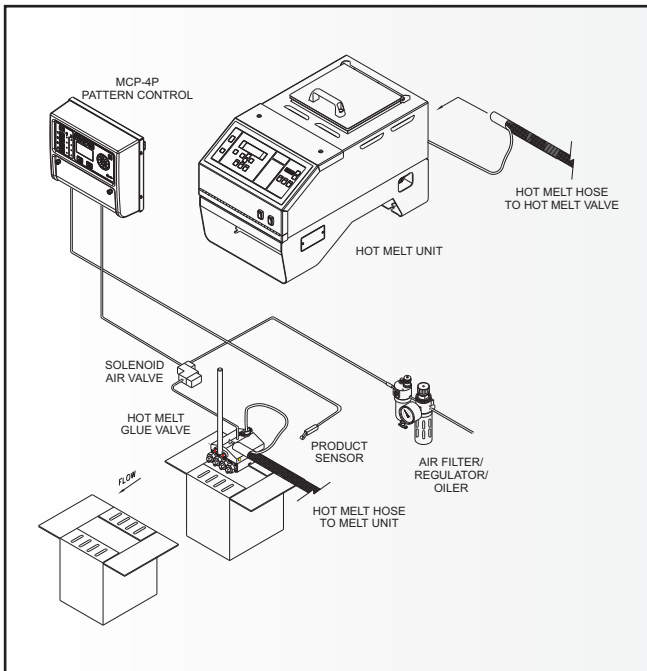
The MCP-4C and MCP-4P controls can be used with an extensive selection of Valco's cold glue or hot melt adhesive dispensing valves including high-speed, non-contact spot gluing, fine-line gluing, and ribbon-pattern gluing. Suited for applications such as folding carton production, envelope manufacturing, paper-folders, book and magazine production, bag-making, corrugated box-making, and other high-speed converting requirements.

THE TOTAL PACKAGE.

The **MELTON** range of products offer a complete selection of hot melt components and support equipment:

- RTD hot melt hoses**
- Manual and automatic dispensing valves**
- Nozzle and applicator styles**
- Mounting bracket packages**
- Solid-state pattern control systems**
- In-line filters**
- Replacement parts for competitive systems**
- High-performance hot melt adhesives**
- Cost-effective rebuild/exchange programs**

Typical MCP-4P System and Characteristics



MCP-4P Specifications

Glue Pressure Outputs	2
Input Voltage	100-130/200-240 VAC, 50/60 Hz, Field selectable
Number of Independent Output Channels	4
Number of Trigger Inputs	4
Maximum Product Length	200 inches (5000 mm)
Glue Pattern Resolution	0.01 inch (1 mm)
Glue Pattern Accuracy	1 mm at 610 m/min
Modes	Timer, Encoder
Maximum Number of Patterns per Channel	8
Gluing Modes	Continuous, stitch, jog, and intermittent
Enclosure Rating	IP 54



For more information visit www.valcomelton.com, or contact your local representative.

World Headquarters: USA, Cincinnati, Ohio (Corporate Offices) • Tel: 513.874.6550 • Fax: 513.874.3612 • info@meltonhotmelt.com

European Headquarters: Spain, Navarra • Tel: +34.948.321.580 • Fax: +34 948 326 584 • melton@melton.es

Asian Headquarters: China, Xiamen, Fujian • Tel: +86.592.591.7854 • Fax: +86.592.591.7834 • china@valcomelton.com

www.valcomelton.com • Serving Over 52 Countries Worldwide.

