



D4-E KIT

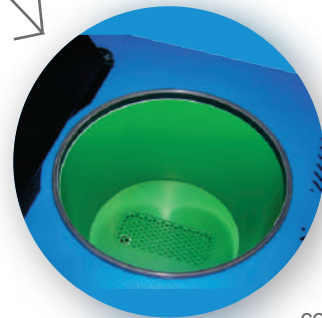
Receive a Gear Pump Hot Melt Unit, Manual Gun and Hose.

Valco Melton's D4-e Kit provides everything you need for fast and precise manual applications. This kit includes the D4-e Gear Pump Hot Melt Unit, one corrugated hose, and one A4 Manual Gun (bead or spray, including nozzles). This packaged solution is ideally suited for a range of packaging, paper converting, print finishing, non-woven and product assembly applications.

- Get a wide range of options to configure your own kit: spray or bead Gun with top or bottom feed, spray or bead nozzles, and various lengths of corrugated hoses
- Experience a cost-effective solution for accurate manual applications
- Simplify maintenance with reliable operation and with Teflon® coated tanks
- Deliver 27 kg/hour with a large capacity gear pump
- Optimize system performance with solid-state controls and precise RTD temperature controls



Corrugated hose for increased resistance and safer operation

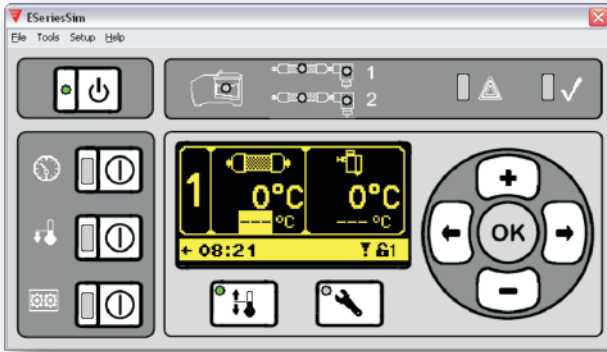


Teflon® coated tank for faster and easy maintenance



New connector simplifies manual applications

Outlets for 2 hoses to facilitate simultaneous use of two guns



D4-e system touch-pad PID controller features:

- Graphical display/ interface
- Programmable sequential zone start-up
- Automatic temperature setback
- High/low temperature protection
- Fahrenheit or Celsius option
- System diagnostics
- Seven-day programmable clock
- Two user selectable inputs and one selectable output
- Password protection for setup configuration

D4-e units feature an easy-to-use touch pad with a bright LCD screen which allows operators to quickly setup system parameters and monitor system operation with a user-friendly interface.

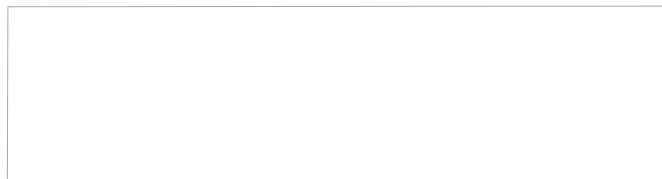
Technical Specifications

D4-e Characteristics	
Tank Capacity	4.0 Kg
Melt Rate	5.0 Kg/hr
Motor	1/4 HP Fixed Speed AC
Pump Rate	27 Kg/hr
Temp. Range	30-230°C
Temp. Stability	0.5°C
Electrical	110/120 VAC or 200/240 VAC 20 AMP single phase with ground

Hot Melt Hose Characteristics	
Max. Working Temperature	220°C
Internal Diameter (mm)	Ø8
Max. Working Pressure	100 bar
Power Consumption	150 W/m
RTD	NI-120
Minimum Curvature Radius (180°)	160 mm
Voltage	200-240 V AC



A4 Manual Gun Characteristics	
Operating Temp.	240°C/464°F
Operating Hydraulic Pressure	50 bar
Air Pressure	4-6 bar/ 58-87 psi
Electric Supply	200-240 VAC 50/60 Hz



For more information, visit <http://hub.am/IFYCEF> or contact your local Valco Melton representative.

World Headquarters: USA, Cincinnati, Ohio (Corporate Offices) • Tel:+1.513.874.6550 • Fax: +1.513.874.3612

Europe Headquarters: Spain, Navarra • Tel:+34.948.321.580 • Fax:+34.948.326.584

Asia Headquarters: China, Xiamen, Fujian • Tel:+86.592.591.7854 • Fax:+86.592.591.7834

info@valcomelton.com • Serving over 76 Countries Worldwide • valcomelton.com