

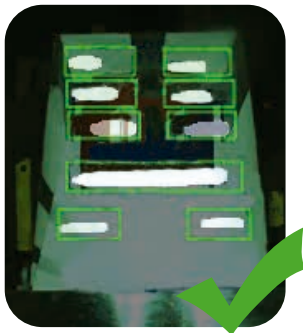


# PACKCHEK

## HOT MELT INSPECTION

PackChek™ is ClearVision's automated packaging inspection system that takes a thermal and visible image of every package to ensure hot melt glue has been applied in the correct locations. Hot melt sensors have been around for decades, but tight space constraints on packaging machinery makes retrofitting them into existing machines extremely difficult. PackChek™ can be installed at the discharge of your machine, without space constraints.

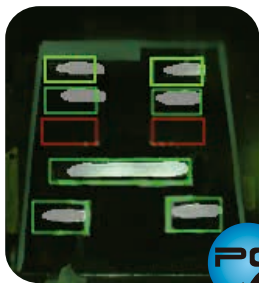
PACKCHEK™ INSTALLED ON A CARTONING MACHINE WITH A HOT MELT GLUING SYSTEM



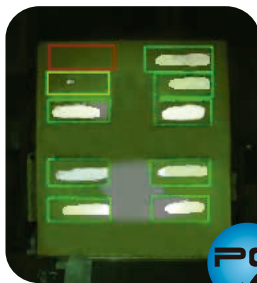
## HOW IT WORKS?

Using the thermal image, PackChek™ finds the heat signature of each glue bead, verifies its position and displays a user friendly image.

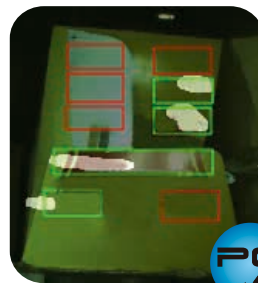
## DEFECTS FOUND BY THE PACKCHEK HOT MELT INSPECTION SYSTEM



Missing glue beads



Weak glue beads



Crushed, torn or open flap



Misaligned glue beads

## THE PERFECT BOX

